

LIVING BY THE LAKE

A separate bunkhouse, connected by a screened porch, provides privacy and comfort.



Set in wooded seclusion by Lake Michigan. With a short walk to both Cherry and Harbert Beaches, this timber-frame house will be a year-round dwelling with central air and gas. The bonus is the detached bunkhouse which can accommodate guests or serve as a Studio.

Year-Round Lake Living
This year round timber-frame home was
purchased in January 2004.

SWAN'S WAY PROPERTIES



A Buffering Bunkhouse. The arrangement of the buildings creates two courtyards, at least one of which is always protected from wind.

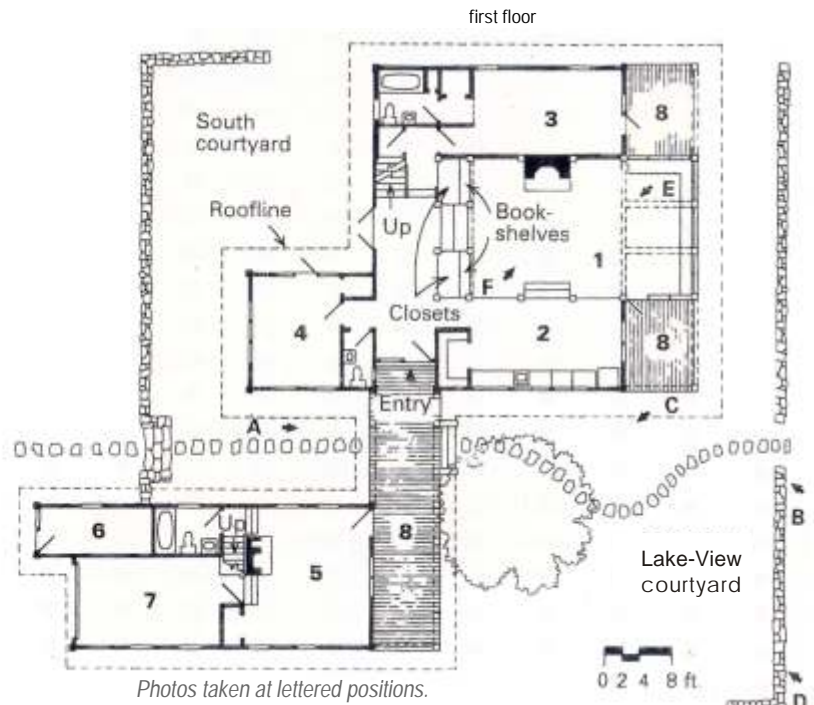
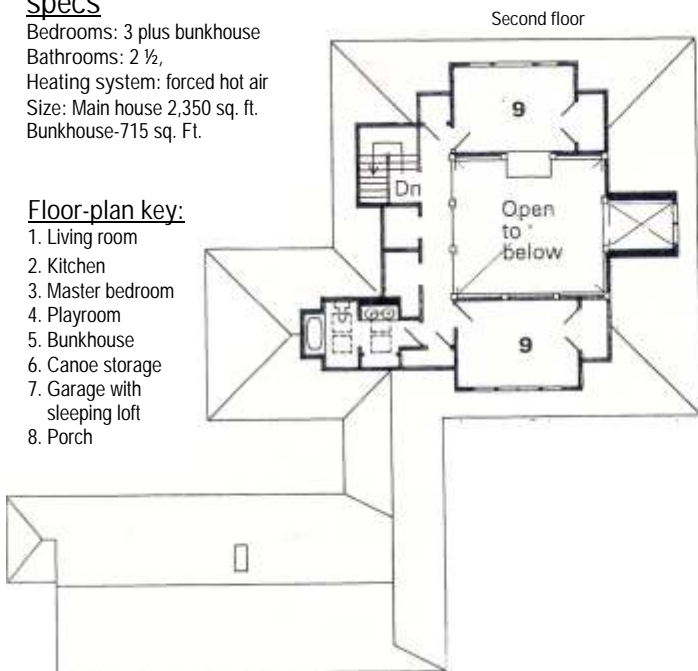
Rustic Simplicity. A large sheltering roof with deep overhangs, big hip dormers and a chimney made of native stone all echo the classic lines of the Midwest prairie-style or Adirondack ucamp. architecture.

specs

Bedrooms: 3 plus bunkhouse
 Bathrooms: 2 ½,
 Heating system: forced hot air
 Size: Main house 2,350 sq. ft.
 Bunkhouse-715 sq. Ft.

Floor-plan key:

1. Living room
2. Kitchen
3. Master bedroom
4. Playroom
5. Bunkhouse
6. Canoe storage
7. Garage with sleeping loft
8. Porch



Photos taken at lettered positions.



Kitchen with a view. The long kitchen is three steps above the living room and is directly opposite the fireplace. An open balustrade mimics the second-floor balcony. A person working in the kitchen can still be a part of the family activities in the living room below. Photo taken at E on floor plan.



Massive timbers, massive fireplace. Traditional timber-frame construction creates a large airy great room with soaring ceilings and a massive fire-place.



Enjoy Lake Michigan.

S **WAN ' S WAY**
ENTERPRISES, INC.